

YEOMAN COURT, NORTH HARROW



Two Bedroom Apartment

Guide Price £320,000

CHAIN FREE. Robertson Phillips are delighted to present this larger than average two double bedroom apartment onto the open market. Situated on the second floor of the building which resides in the North Harrow High street, just 100m from the tube station, the property covers over 750sq feet internally, has two spacious double bedrooms and the decor is modern throughout.



Location: Yeoman Court is situated in North Harrow, opposite the local tube station which gives access to the Metropolitan Line. There is also an array of eateries, coffee shops, a gym, and food shopping facilities in the vicinity of the property.



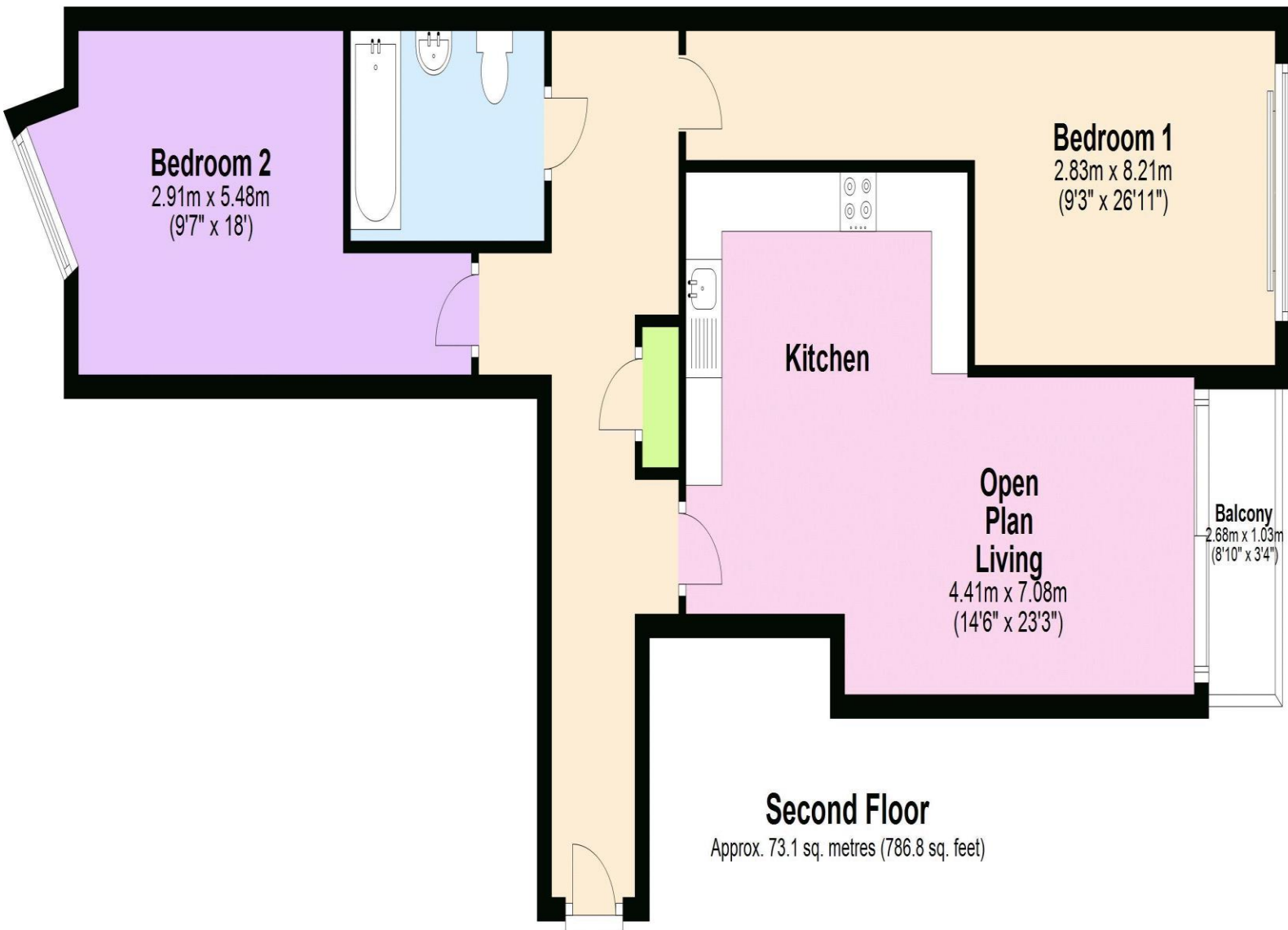


- *Two Double Bedroom Flat*
- *Opposite North Harrow Station*
- *Large Shared Terrace*
- *Over 750 Sq Ft Internally*
- *Balcony*
- *113 Years Remaining On Lease*



Additional Information

TENURE. LEASEHOLD (113 YEARS REMAINING)
LOCAL AUTHORITY. HARROW COUNCIL
SERVICE CHARGE AND GROUND RENT: £117PM



Total area: approx. 73.1 sq. metres (786.8 sq. feet)



We have not sought to verify the legal title of the property, the existence of planning permissions and/or building regulation approvals and have been unable to check the working condition of any services or appliances.

Property layouts are for general guidance and are not drawn exactly to scale. Measurements are taken at the widest points and bays, alcoves, wardrobes etc. may not be shown.